



## **T&T MARINE** Maritime Agency

Pasaje de las Ciencias 75 - Office 02 – North Coral Plaza

(1670) Nordelta, Tigre - Buenos Aires - Argentina

Tel: +54 11 4873 0802/0803

E-mail: operations@tt-maritime.com.ar

### **LATEST NEWS**

#### **NECOCHEA & BAHÍA BLANCA PORTS – TRUCKERS’ STRIKE – 08/04**

FOLLOWING BELOW, PLEASE BE INFORMED THAT THE TRUCKERS’ STRIKE REMAINS ONGOING WITH NO SIGNIFICANT CHANGES REPORTED SO FAR.

DELAYS IN CARGO DELIVERY TO PORTS CONTINUE, AND SOME TERMINALS ARE BEING AFFECTED DUE TO LACK OF CARGO.

NO FURTHER INFORMATION IS AVAILABLE REGARDING THE DURATION OF THE MEASURE.

#### **NECOCHEA & BAHÍA BLANCA PORTS – TRUCKERS’ STRIKE – 06/04**

PLEASE BE INFORMED THAT A TRUCKERS’ STRIKE CARRIED OUT BY SELF-CONVENED DRIVERS FROM NECOCHEA, QUEQUÉN, BAHÍA BLANCA HAS BEEN ONGOING SINCE 06.04 AT 0600 HRS.

AS A RESULT, THERE ARE DELAYS IN CARGO DELIVERY TO PORTS AND SOME TERMINALS ARE STARTING TO BE AFFECTED DUE TO LACK OF CARGO.

SO FAR, THERE IS NO OFFICIAL INFORMATION REGARDING HOW LONG THE SITUATION MAY LAST OR ITS POSSIBLE IMPACT ON OPERATIONS.

#### **DRAFT FORECAST // PARANA RIVER, ARGENTINA - April 01st, 2026**

TODAY’S MAX ALLOWED SAILING DRAFT AT UP RIVER PORTS IS: 10.24M FW (0.998).

IRRESPECTIVE OF DAILY MAX ALLOWED SAILING DRAFT IN THE PARANA RIVER, VESSELS CAN NAVIGATE THE RIVER PLATE UP TO A MAX DRAFT (SUGGESTED BY PILOTS) OF 10.50/10.55M FW (I.E. AFTER BUNKERING AT ZONA COMUN DURING OUTBOUND NAVIGATION).

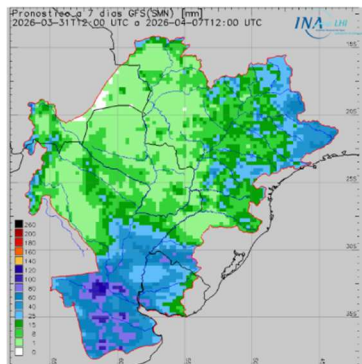
HEREUNDER YOU WILL FIND OUR PREDICTION FOR THE WEEKS/MONTHS TO COME BASED ON REPORTS & INFORMATION GATHERED FROM SEVERAL SOURCES:

	SAN LORENZO + ROSARIO MIN - MAX	SAN NICOLAS + RAMALLO MIN - MAX
1 <sup>ST</sup> HALF APRIL	9.90/10.40M FW	10.00/10.50M FW
2 <sup>ND</sup> HALF APRIL	9.90/10.40M FW	10.00/10.50M FW
1 <sup>ST</sup> HALF MAY	9.85/10.35M FW	9.95/10.45M FW
2 <sup>ND</sup> HALF MAY	9.80/10.30M FW	9.90/10.40M FW
1 <sup>ST</sup> HALF JUNE	9.80/10.30M FW	9.90/10.40M FW

 DREDGERS CURRENTLY WORKING AT RIVER PLATE & PARANA RIVER:

- . KM 23-27 RIVER PLATE (EMILIO MITRE CHANNEL): DREDGER “PINTA”.
- . KM 283 PARANA RIVER (SAN PEDRO AREA): DREDGER “TACCOLA”.
- . KM 410/475 PARANA RIVER (SAN LORENZO AREA): DREDGER “NIÑA”.

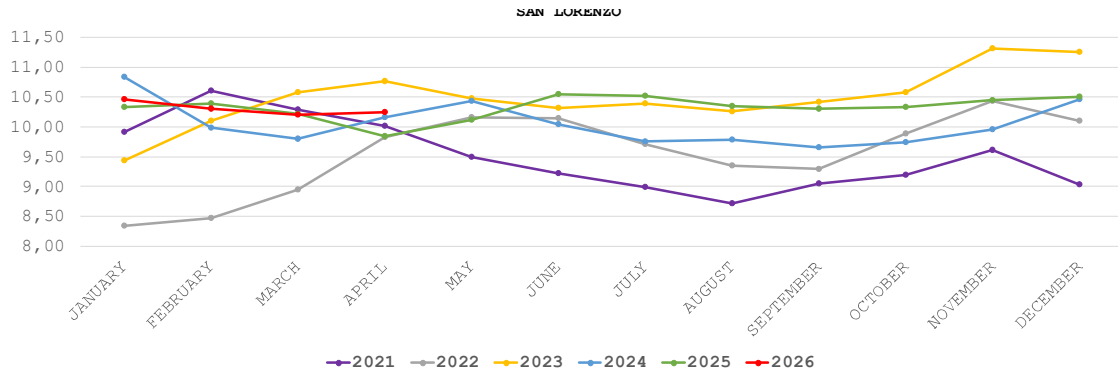
 PRECIPITATIONS AT NORTH OF THE COUNTRY / SOUTH OF BRAZIL:



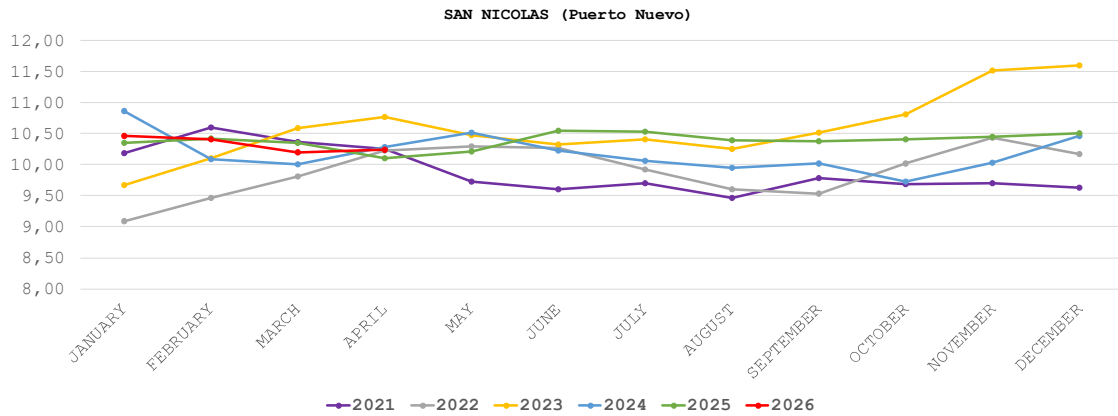
During the next 7 days, Light to moderate average rainfall accumulations are anticipated over the upper Paraná River basin. Likewise, light rainfall is projected in both the Iguazú River basin and the upper Uruguay River basin.

*IT'S IMPORTANT TO HIGHLIGHT THAT RIVER BASIN IS CHARACTERIZED BY A RAPID RESPONSE TO EXTREME EVENTS, REASON WHY IT IS SUBJECT TO THE EVOLUTION OF RAINFALL THAT OCCURS AT IMMEDIATE INFLOW AREA.*





SAN LORENZO													
YEAR	JANUARY	FEBRUARY	MARCH	APRIL	MAY	JUNE	JULY	AUGUST	SEPTEMBER	OCTOBER	NOVEMBER	DECEMBER	ANNUAL
2021	9,92	10,61	10,30	10,02	9,50	9,22	8,99	8,71	9,05	9,19	9,61	9,04	9,51
2022	8,35	8,47	8,95	9,83	10,16	10,15	9,71	9,36	9,30	9,88	10,44	10,10	9,56
2023	9,43	10,10	10,58	10,77	10,48	10,32	10,39	10,26	10,41	10,58	11,31	11,25	10,49
2024	10,84	9,98	9,80	10,16	10,43	10,05	9,75	9,79	9,65	9,74	9,96	10,47	10,05
2025	10,33	10,39	10,22	9,85	10,11	10,55	10,52	10,35	10,31	10,34	10,45	10,51	10,33
2026	10,46	10,30	10,20	10,24									10,30



SAN NICOLAS (Puerto Nuevo)													
YEAR	JANUARY	FEBRUARY	MARCH	APRIL	MAY	JUNE	JULY	AUGUST	SEPTEMBER	OCTOBER	NOVEMBER	DECEMBER	ANNUAL
2021	10,19	10,61	10,37	10,25	9,73	9,61	9,70	9,46	9,78	9,69	9,71	9,64	9,90
2022	9,09	9,46	9,81	10,23	10,30	10,26	9,93	9,61	9,53	10,03	10,44	10,17	9,90
2023	9,67	10,10	10,58	10,77	10,48	10,32	10,40	10,26	10,51	10,81	11,52	11,60	10,58
2024	10,87	10,08	10,00	10,29	10,52	10,23	10,06	9,95	10,02	9,73	10,03	10,47	10,19
2025	10,36	10,42	10,35	10,11	10,21	10,55	10,53	10,39	10,38	10,41	10,45	10,51	10,39
2026	10,46	10,40	10,20	10,24									10,33

BEST REGARDS,

**HOLIDAYS IN ARGENTINA – APRIL 2ND & APRIL 3RD, 2026**

PLEASE BE INFORMED THAT THURSDAY, APRIL 2ND (MALVINAS ISLANDS DAY) AND FRIDAY, APRIL 3RD (GOOD FRIDAY) WILL BE NATIONAL HOLIDAYS IN ARGENTINA.

IN VIEW OF THE ABOVE, OVERTIME FOR THE LONG WEEKEND (FROM APRIL 1ST AT 1800 HRS UNTIL APRIL 6TH AT 0600 HRS) SHOULD BE ARRANGED LATEST BY APRIL 1ST AM.

---

### **CESSATION OF ACTIVITIES IN NUEVA PALMIRA, URUGUAY**

PLEASE NOTE THAT THE PORT UNION (SUPRA) HAS CALLED FOR A WORK STOPPAGE AND ASSEMBLY OVER SALARY ISSUES TODAY MAR 23RD, STARTING AT 10:00 AM LT FOR AN INDEFINITE PERIOD OF TIME.

---

AS A CONSEQUENCE, OPERATIONS AT NUEVA PALMIRA PORT COULD BE AFFECTED. FROM Montevideo'S SIDE, UNION IS reportedly analyzing whether or not to cease operations.

### **HOLIDAY IN ARGENTINA – MARCH 23RD & 24TH 2026**

PLEASE BE INFORMED THAT NEXT MONDAY MAR 23RD AND TUESDAY MAR 24TH WILL BE NON-WORKING DAY FOR TOURISM PURPOSES & NATIONAL HOLIDAY AT ARGENTINA RESPECTIVELY.

IN VIEW OF THE ABOVE, OVERTIME FOR THE LONG WEEKEND (FROM FRIDAY 20TH AT 1800 HRS UNTIL WEDNESDAY 25TH AT 0600 HRS) SHOULD BE ARRANGED LATEST BY MARCH 20TH AM.

---

### **OIL WORKERS UNION STRIKE IN ARGENTINA**

**FURTHER TO OUR PREVIOUS NOTICE, FROM ROSARIO SIDE, OILSEED PLANTS ALSO REPORTED AFFECTED BY THE STRIKE.**

CURRENT BERTH STATUS:

- CARGILL VGG: NIL
- CARGILL ALVEAR: MV ST PAUL – AFFECTED.
- LDC G. LAGOS DRY: NIL – MAINTENANCE UNTIL 02.03 (TBC).
- LDC G. LAGOS LIQUID: NIL – MAINTENANCE UNTIL 02.03 (TBC).

UP-RIVER OPERATIONS COULD THEREFORE BE IMPACTED. WE WILL KEEP YOU UPDATED.

---

### **OIL WORKERS UNION STRIKE IN ARGENTINA**

KINDLY BE ADVISED THAT THE OILSEED WORKERS UNION HAS DECLARED A 24-HOUR NATIONAL STRIKE COMMENCING AT 0000 HRS ON 27 FEBRUARY.

AT PRESENT, OPERATIONS AT PUERTO GALVÁN – TERMINAL / BERTH 2/3 (BAHÍA BLANCA) WILL BE AFFECTED, WITH NO CARGO OPERATIONS EXPECTED DURING THE MENTIONED PERIOD.

ALTHOUGH THE CONFIRMED IMPACT IS CURRENTLY IN BAHÍA BLANCA ONLY, OTHER PORTS COULD ALSO BE AFFECTED. WILL KEEP YOU DULY INFORMED OF ANY DEVELOPMENTS.

---

### **UPDATE – ARGENTINA STRIKE - FEB 19TH, 2026**

FURTHER TO BELOW, PLEASE BE ADVISED THAT THE CGT (ARGENTINA'S MAIN LABOR CONFEDERATION) HAS CALLED A 24 HRS NATIONAL STRIKE FOR THURSDAY 19TH FEBRUARY 2026.

MOST LOCAL UNIONS HAVE CONFIRMED THEIR ADHESION AND, TOGETHER WITH THE TUGBOAT AND LAUNCH STRIKE, PORT ACTIVITIES ARE EXPECTED TO BE FULLY INTERRUPTED.

STEVEDORING UNIONS HAVE ALSO CONFIRMED THEIR ADHESION, THEREFORE, NO CARGO OPERATIONS ARE EXPECTED AT ANY ARGENTINE PORTS.

---

### **MARITIME AND PORT SERVICES STRIKE ON FEB 18–19TH, 2026**

PLEASE BE ADVISED THAT LABOR UNION (FE.SI.MA.F) HAS ANNOUNCED A 48 HRS GENERAL STRIKE FROM WEDNESDAY FEB 18TH AT 0000 HRS UNTIL THURSDAY FEB 19TH AT 2400 HRS.

DURING THIS PERIOD, TUGBOAT, MOORING / UNMOORING AND LAUNCH SERVICES (INCLUDING PILOTS ONES) WOULD BE AFFECTED, IMPACTING VESSEL MOVEMENTS AT ALL ARGENTINE PORTS, INCLUDING UP RIVER, NECOCHEA AND BAHIA BLANCA.

---

**HOLIDAY IN ARGENTINA – FEBRUARY 16TH & 17TH 2026**

PLEASE BE INFORMED THAT NEXT MONDAY AND TUESDAY, FEB 16TH & 17TH WILL BE A NATIONAL HOLIDAY IN ARGENTINA DUE TO CARNIVAL.

IN VIEW OF THE ABOVE, OVERTIME FOR THE LONG WEEKEND (FROM FRIDAY 13TH AT 1800 HRS UNTIL WEDNESDAY 18TH AT 0600 HRS) SHOULD BE ARRANGED LATEST BY FEBRUARY 13TH AM.

---

**UPDATE // NEW GOVERNMENT REGULATION (WATCHMEN)**

CONTINUING WITH THIS TOPIC, ALTHOUGH NATIONAL DECREE 37/2025 (EFFECTIVE JAN 20TH, 2025) MAKES THIS SERVICE OPTIONAL, PROVINCIAL MEASURES (TIME BEING ONLY BUENOS AIRES) HAVE CREATED CONFLICTING INTERPRETATIONS THAT MAY LEAVE AGENTS AND OWNERS/VESSELS VULNERABLE TO FUTURE CLAIMS IF WATCHMEN ARE NOT HIRED.

THE PORTS IN BUENOS AIRES POTENTIALLY AFFECTED ARE SAN NICOLÁS, RAMALLO, SAN PEDRO, ZÁRATE, CAMPANA, DOCK SUD, LA PLATA, NECOCHEA AND BAHÍA BLANCA. HOWEVER, THESE CLAIMS BY THE MINISTRY OF LABOR FROM BUENOS AIRES PROVINCE COULD EXTEND TO THE REST OF THE PROVINCES, INCLUDING THE UPRIVER PORTS LOCATED IN THE PROVINCE OF SANTA FE, SUCH AS VILLA CONSTITUCIÓN, ROSARIO AND SAN LORENZO.

HAVING SAID THE ABOVE, WE RESPECTFULLY SUGGEST TO CHECK WITH YOUR AGENTS CASE BY CASE IN ORDER TO ANALYZE BEST COURSE OF ACTION INDIVIDUALLY.

IN CASE ANY PARTY WOULD LIKE TO CONTRACT SAID SERVICE IN ORDER TO AVOID PROBLEMS WITH UNIONS AND/OR POTENTIAL LEGAL EXPOSURE, WE REMIND YOU THAT THE DAILY COST OF SUCH SERVICE IS IN THE RANGE OF USD 1,600.

---

**UPDATE // NEW government REGULATION (WATCHMEN)**

A RULING BY THE BUENOS AIRES PROVINCE MINISTRY OF LABOUR HAS DECLARED THE NATIONAL DECREE THAT WITHDRAW THE COMPULSORY HIRING OF WATCHMEN SERVICES AT

BUENOS AIRES PORTS (MAINLY: BAHÍA BLANCA, NECOCHEA/QUEQUÉN, LA PLATA, BUENOS AIRES, DOCK SUD, CAMPANA, ZÁRATE, SAN PEDRO, RAMALLO & SAN NICOLÁS) INAPPLICABLE.

THIS WAS DONE WITH THE AIM OF PRESERVING JOBS, STRENGTHENING OPERATIONAL SAFETY AND PROTECTING PORT ACTIVITY.

ALTHOUGH THERE IS NO OFFICIAL CONFIRMATION FROM COASTGUARD AND/OR THE NATIONAL NAVIGATION CENTRE UP TO NOW, IF THIS INITIATIVE IS RE-CONFIRMED, THE APPOINTMENT OF WATCHMEN SERVICES AT ABOVE MENTIONED PORTS MIGHT BECOME COMPULSORY ONCE AGAIN (ROSARIO & SAN LORENZO WOULD BE EXCLUDED FROM SUCH RULING AS SAME ARE PART OF SANTA FE PROVINCE).